

Agricultural Inputs

Improved cash crop seeds, tools, and organic inputs for crop diversification, higher yields and better value.

Technical Knowledge

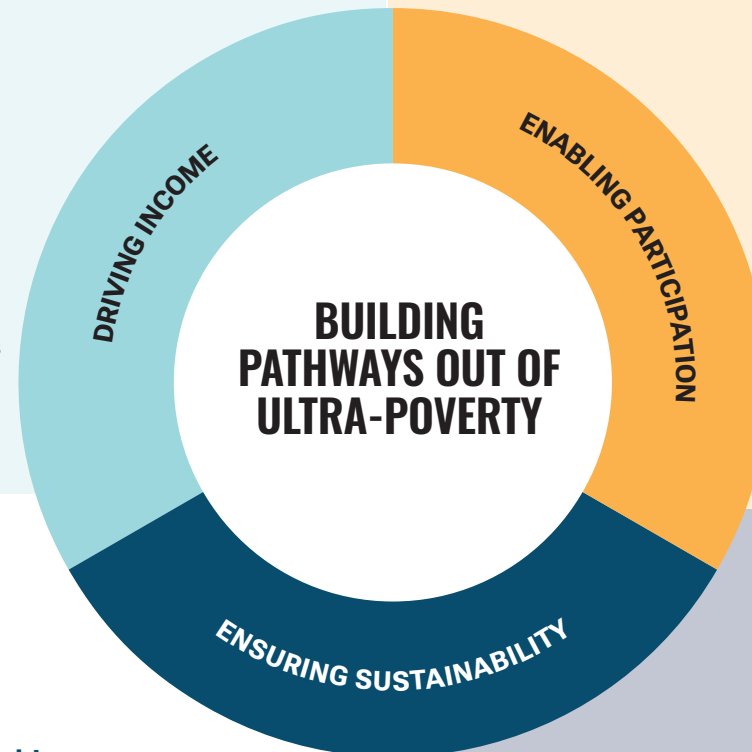
In-depth training program on pre- and post-harvest management, climate resilience, the use of organic fertilizer and pesticides, and income diversification.

Coaching and Mentorship

Ongoing support to agricultural initiatives at the village and household levels.

Market Access

We identify ways of improving farmers' access to markets by providing information about market opportunities, establishing and training cooperatives to self-organize, and connecting them with buyers.



Addressing Barriers to Development

- **Food Security:** More vegetable varieties for a consistent and sustainable source of nutritious food and supplementary income.
- **Water Access:** Access to clean water within 1 km to unlock time and improve health outcomes.
- **Health Improvement:** Health awareness on preventative measures and good sanitation and hygiene practices to reduce the occurrence of illnesses and medical cost.

Cooperatives

Establishing cooperatives, including Village Savings and Loan Associations, to promote savings, create local access to credit for income and asset diversification, and collective bargaining power.

Equitable Development

Training to change behaviours on the participation of women and youth, financial literacy, time management and mindset change.

We partner with last-mile farming communities in Sub-Saharan Africa over 24 months to address ultra-poverty through a multi-dimensional program model.

POVERTY IS MULTIDIMENSIONAL

Multidimensional poverty goes beyond monetary deprivations such as poor health, high food insecurity, inadequate living standards, lack of access to basic infrastructure, and low income or consumption.

OUR PROGRAMS ARE:



Data-informed

Using innovative tech solutions, we collect, analyze, and visualize 4000+ data points for program planning, real-time program adjustments, and optimization of costs.



Community-driven

Each project is designed to address community-identified needs and is implemented through a community-led approach.



Impact-focused

Our low-cost, high-impact, and responsive model helps maximize household income and earnings at scale.



Government-integrated

We engage local governments and partner with the federal government to maximize our program reach, reduce costs and bring systemic change.

Local Structures

Establishing local support structures for agriculture, livestock, water and other initiatives.

Government Partnerships

Training and utilizing local government extension workers for program delivery.

Community-led Development

Enabling communities to self-organize, identify opportunities, and implement development initiatives that contribute to incomes and local infrastructure, and improve quality of life.

ULTRA-POVERTY IS A CHRONIC CYCLE

Ultra-poverty in hard-to-reach rural communities could mean earning as little as \$0.75/day for a household of five.

LAST-MILE COMMUNITIES EXPERIENCE DEEP DISADVANTAGE

Isolated communities often remain neglected in development and funding priorities due to lack of human capital (skills, time, education, capacity) and the complex development challenges in hard-to-reach areas.